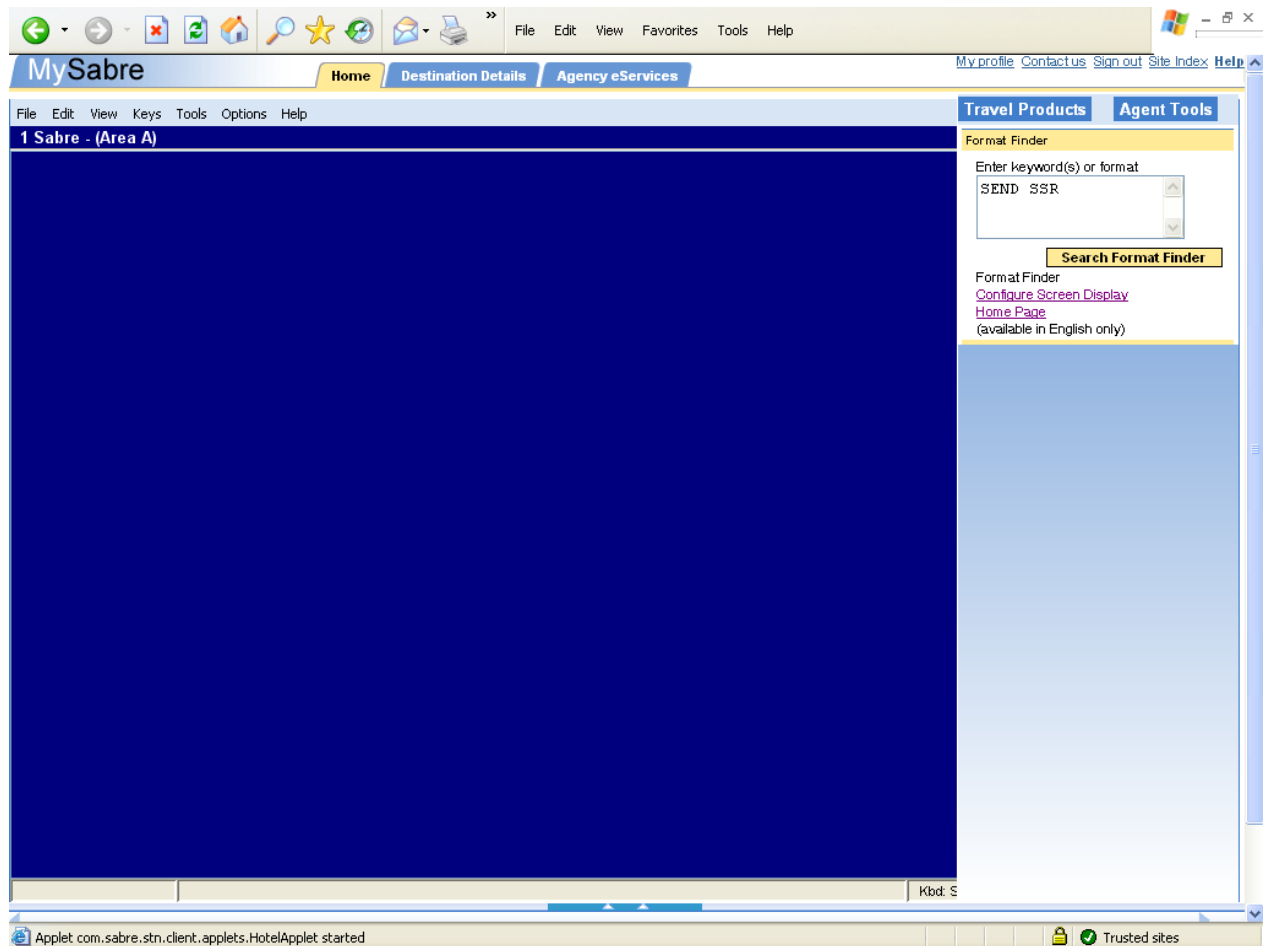


Enhanced functionality of Format Finder

Format Finder is the travel agent's help reference for *Sabre* system formats and processes. It is designed for both new and experienced travel agents.

How to use Format Finder? The procedure is very simple....Just open the Agent Tools tab and select Format Finder to begin a search. Type the desired search words into the search box and click Search Format Finder. No limit to number of keywords that can be entered.

Screen 1



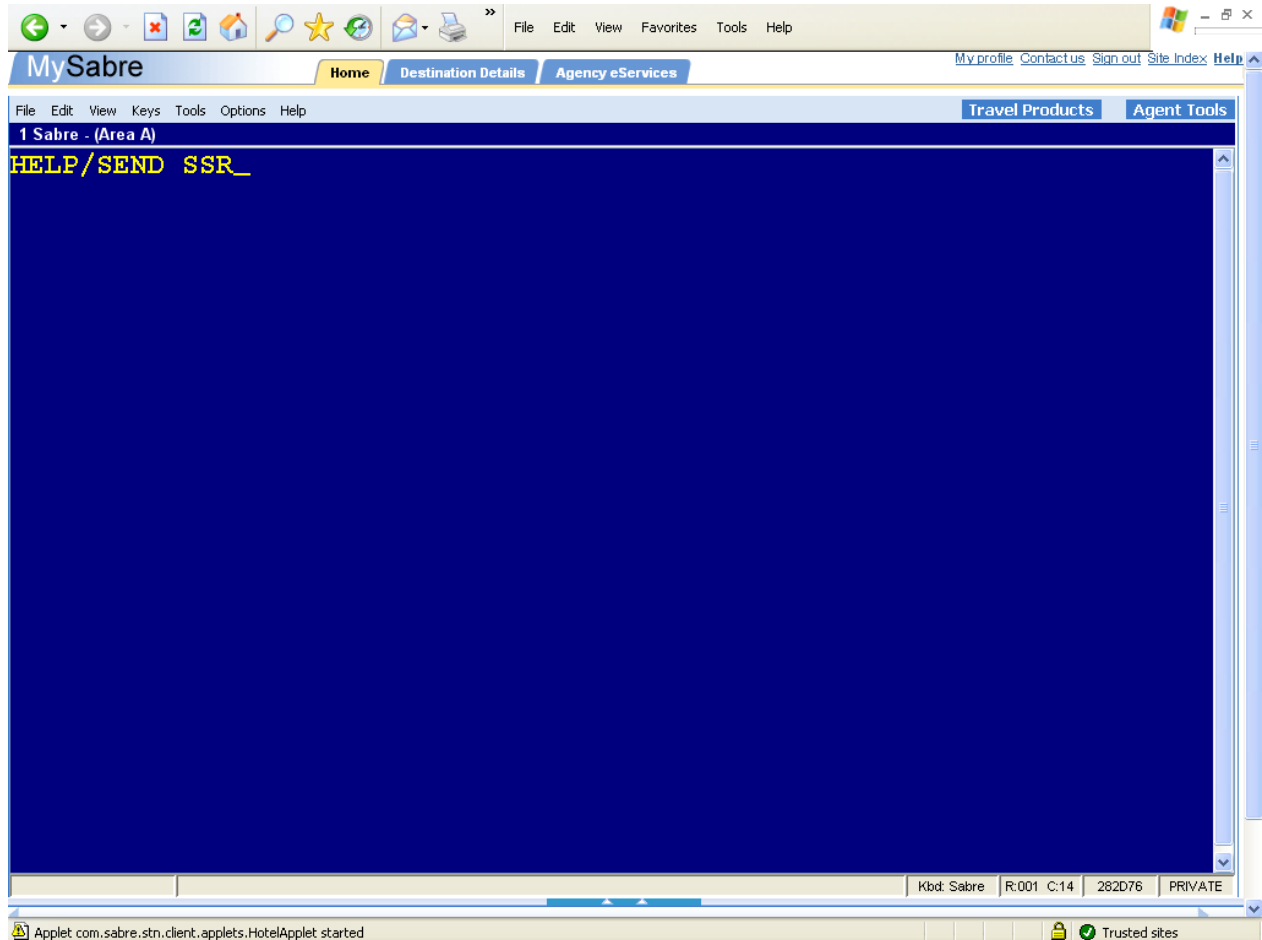
Format Finder opens with the search words entered and a list of search results in the left navigation pane. Clickable links to the specific area of the page appear on the right navigator pane to take you to the content page.

Screen 2

The screenshot displays the Sabre Format Finder interface within a web browser. The browser's address bar shows the URL `http://www.sabre.com`. The page header includes the Sabre logo and navigation tabs for Home, Destination Details, and Agency eServices. A secondary navigation bar contains Travel Products and Agent Tools. The main content area is titled "Format Finder" and features a search input field containing "SEND SSR" and a "Send to Sabre" button. Below the search field, there are navigation links for Contents, Search, Home, and Contact Us. The search results are displayed in two columns. The left column lists various search results, including "Send an SSR", "SSR / OSI Field - Overview- Display-Delete-Modify", "Pay for a Signature Seat on Midwest Airlines", "Advise Ticket Number - Ticket Number Notification", "Guaranteed Ticketing - Overview - Send OTHS", and "SSR and OSI Topics". The right column provides detailed descriptions for each result, such as "Send an SSR. pnrfo1000. ... Use these formats to send an SSR to the airlines to indicate a passenger as a child. For Infant PNRs, see INFT - Infant in a PNR. ..." and "SSR / OSI Field - Overview- Display-Delete-Modify ... GFAX. Use the GFAX field to send messages to all carriers, except American Airlines. GFAX apply to both OSI and SSR messages. Begin ...". The footer of the page includes the Sabre logo, copyright information for Sabre Inc. (©2004), and a link to IP NOTICES. The browser's status bar at the bottom shows the URL `http://www.sabre.com` and a "Trusted sites" icon.

Enhanced Search Results powered by Google Search improves efficiency of the agent as it brings in help into the agent workflow.

Now with the enhanced functionality you have the ability to launch Format Finder through a linear command from your blue screen by just typing the word **HELP/** followed by a keyword or keywords and press ENTER. No limit to number of keywords that can be entered. Command is send to Format Finder and a search is executed.



Format finder is launched in the secondary application area of MySabre and a list search results is returned. Just like in Screen 2. Each result includes information about topics on that page.